

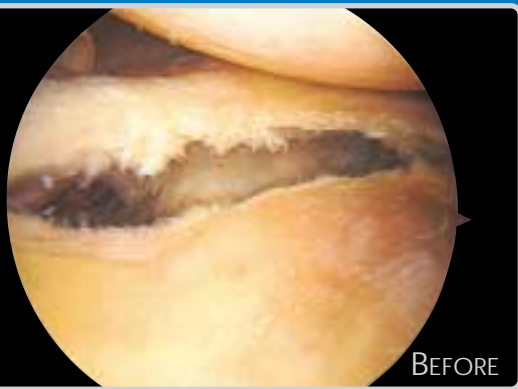
BIOKNOTLESS[™] ANCHOR

THE FIRST ABSORBABLE KNOTLESS SUTURE ANCHOR

**FULLY ABSORBABLE
BIOCOMPATIBLE PLA ANCHOR**
Preloaded with PANACRYL[™],
long-term braided absorbable
suture from ETHICON

LONG-LASTING
Strength retained throughout
soft tissue healing period

EASY TO USE
Simple insertion technique



Mitek[®]
PRODUCTS

Innovation Defined by Experience

The Easiest Knot You'll Never Tie

BIOKNOTLESS ANCHOR

Indications

The Mitek BioKnotless Suture Anchor is indicated for use in soft tissue to bone fixation in association with adequate postoperative immobilization as follows:

Shoulder: Bankart Repair, SLAP lesion repair, acromioclavicular separation, rotator cuff repair, capsule shift/capsulolabral reconstruction, biceps tenodesis, deltoid repair.

Ankle: Lateral instability, medial instability, achilles tendon repair/reconstruction, midfoot reconstruction.

Foot: Hallux Valgus reconstruction.

Elbow: Tennis elbow repair, biceps tendon reattachment.

Knee: Extra capsular repairs; reattachment of: medial collateral ligament, lateral collateral ligament, posterior oblique ligament or joint capsule to tibia and joint capsule closure to anterior proximal tibia; extra capsular reconstruction, ITB tenodesis; patellar ligament and tendon avulsions.

Contraindications

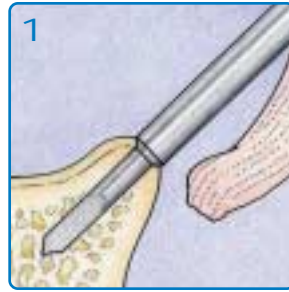
1. Surgical procedures other than those listed in the "Indications" section;
2. Pathological conditions of bone, such as cystic changes or severe osteopenia, which would compromise secure anchor fixation;
3. Pathological conditions in the soft tissue to be attached, which would impair secure fixation by suture; comminuted bone surface, which would compromise secure anchor fixation;
4. Physical conditions that would eliminate, or tend to eliminate, adequate implant support or retard healing, i.e. blood supply limitation, infection, etc;
5. Conditions that tend to preempt the patient's ability to heal or the healing period, such as senility, mental illness, or alcoholism; attachment of artificial ligaments or other implants.

WARNINGS

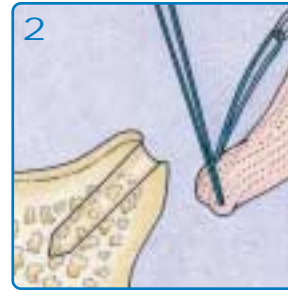
- Since the anchor is absorbable, immobilization by external support should be employed. The Mitek BioKnotless Anchor is designed to lock into cancellous bone.
- Do not use this anchor with a drill bit that is not 2.9mm in diameter and that does not generate a precise diameter drill hole that is at least 18mm in depth.
- In the event that the Mitek BioKnotless Anchor must be removed, overdrill the original insertion hole or use curettes or osteotomies to open the cortical surface. Carefully remove the cancellous bone to expose the anchor. Use a needle holder or forceps to grasp the anchor and remove it.
- A Mitek BioKnotless anchor must never be reused. In the event that the anchor should dislodge from the inserter or bone site, do not attempt to reattach the anchor to the inserter. In this case, discard the anchor and inserter and use a new anchor.

CAUTION: Federal Law (USA) restricts this device to sale by or on the order of a physician.

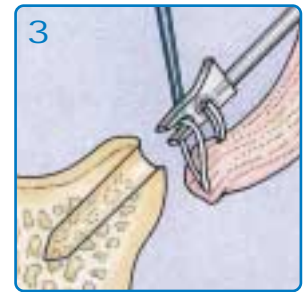
QUICK & EASY TECHNIQUE



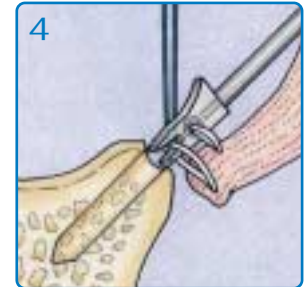
1
Predrill hole.



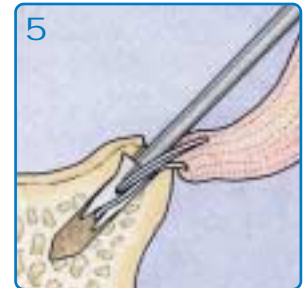
2
Pass the utility loop through the tissue.



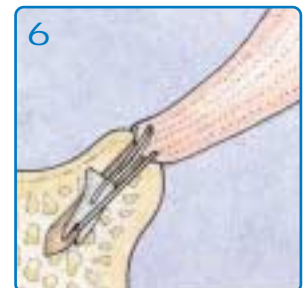
3
Pull the anchor loop through the tissue and capture one strand in the mouth of the BioKnotless Anchor.



4
Orient anchor straight into drill hole.

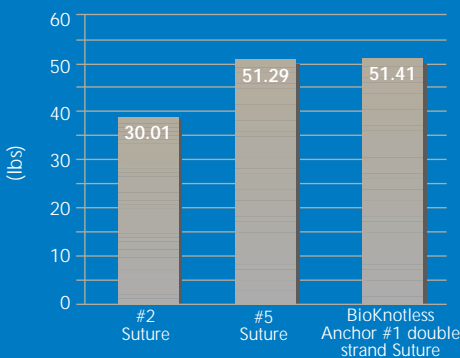


5
Insert the BioKnotless Anchor into the drill hole.



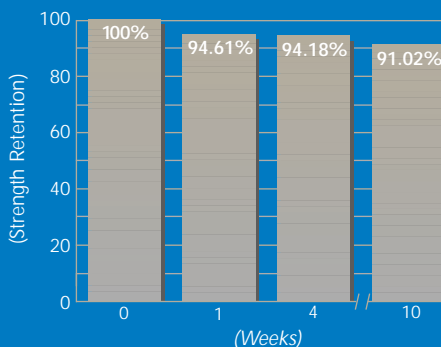
6
Once the tissue is at the desired location on the bone, unscrew the inserter and pull the utility loop free from the anchor.

SUTURE BREAK STRENGTH COMPARISON



Data on file at Mitek Products

% STRENGTH RETENTION OVER TIME



Data on file at Mitek Products

The Mitek Absorbable BioKnotless Suture Anchor retains its strength throughout the healing period.

Ordering Information

Cat. No.	Description	Qty.	Order Qty.
212729	BioKnotless Suture Anchor	1/box	_____

Surgeon's Signature _____

Date _____

For more information, call your Mitek representative at 1-800-382-4682 or visit us at www.mitek.com. Mitek Products, Division of ETHICON, Inc., 60 Glacier Drive, Westwood, Massachusetts 02090

Mitek[®]
PRODUCTS

ETHICON
a Johnson & Johnson company

Mitek, BioKnotless and PANACRYL are trademarks of ETHICON, Inc., a Johnson & Johnson company, or its Mitek Products Division. These products are covered by one or more of the following U.S. patents: 5,709,708; 5,782,804, 5,841,168; 6,024,75. Other patents pending. © Mitek Products, a Division of ETHICON, Inc. 2001. All rights reserved. Printed in the USA P/N 900541 Rev. A 02/01.